

**PLANT LIST****Dial Range**

Created 10-Jun-13
 Updated 9-May-23
 By Dick Burns, Burnie FNC

[Goto Photos](#)

Scientific name	status	Common Name	Description
Acacia dealbata		silver wattle	tree with grey green feathery leaves; golden flowers
Acacia melanoxylon		blackwood	tree to 30m; leaves with parallel veins; round flower heads
Acacia mucronata	e	caterpillar wattle	shrub to small tree; leaves narrow to 15 cm, small point; golden flowers in spikes.
Acacia mucronata		caterpillar wattle	erect shrub/small tree; leaves narrow linear to 15cm long with short narrow point; yellow flowers in spikes
Acacia suaveolens		sweet wattle	shrub to 2 m; phyllodes blue/green to 15 cm; flowers round, cream, in axils, sweet scented.
Acacia verticillata		prickly moses	shrub/tree to 6 m; phyllodes in whorls, sharp; flowers yellow, in spikes.
Amperea xiphioclada		broom spurge	almost leafless with angles stems, forms clumps resembling grass tussock
Aotus ericoides		golden pea	shrub to 1.5m; leaves narrow to 12mm long, margins downrolled; yellow pea flower with red throat
Aristotelia peduncularis	e	heartberry	straggling shrub to 1.5m; leaves to 70mm. lance-shaped, edges serrated; flowers white, bell-shaped, petals three-toothed; fruit heart shaped, white, red or black
Atherosperma moschatum		sassafras	tree to 25m; leaves to 8cm elliptical, margins often toothed; flowers white, in pairs, pendulous, 4-petalled. Male and female flowers on same or separate trees
Banksia marginata		silver banksia	tree with typical banksia cones or yellow flower spikes
Bauera rubioides		wiry bauera	sprawling wiry shrub; leaves opposite, each with three leaflets; flowers white to pink
Bedfordia salicina	e	tasmanian blanketleaf	shrub/tree to 5m; leaves dark green above silver hairy below; yellow daisy flowers in groups
Billardiera macrantha		forest appleberry	vine clammers over other plants; leaves lance-like to 5cm; flowers tubular, yellow/green; fruit blue/purple
Billardiera mutabilis		green appleberry	vine; narrow leaves; yellowish bell-shaped flowers; yellow fruit
Boronia anemonifolia		stinky boronia	shrub to 2m high; leaves dark green, with 3 leaflets, to 1.5cm long; flowers 4-petalled, white/pink

Dial Rng\$

<i>Bursaria spinosa</i>		prickly box	small tree; distinctive "purses" (seed cases); white starry flowers
<i>Cassinia aculeata</i>		dolly bush	shrub to 3 m; large clusters of small white flowers
<i>Cassytha glabella</i>		slender dodderlaurel	slender parasitic twiner; appears leafless; tiny white flowers in bunches on short stalks
<i>Comesperma volubile</i>		blue lovecreeper	wiry climber; small leaves; blue flowers along stems
<i>Coprosma hirtella</i>		coffeeberry	shrub to 2m; leaves dark green, leathery to 6cm long, pointed tip; fruit red/black, fleshy
<i>Coprosma quadrifida</i>		native currant	erect shrub to 4m; leaves to 10mm; flowers, male & female on separate plants, 4 white petals; fruit shiny red/orange
<i>Cyathodes glauca</i>	e	purple cheeseberry	shrub to 3m; leaves pointed, to 5cm, green above whitish below; flowers tubular, white; fruit fleshy, white to red
<i>Daviesia ulicifolia</i>		yellow spiky bitterpea	prickly woody shrub to 2 m; leaves spiky to 3 cm; yellow pea flowers with reddish markings.
<i>Drosera auriculata</i>		tall sundew	herb; fine stem; leaves fringed with glistening hairs
<i>Drosera binata</i>		forked sundew	herb; leaves forked, on long stem, blades with glistening hairs; flowers white, to 2cm diam, in groups of up to 40
<i>Epacris impressa</i>		common heath	shrub; white, red or pink tubular flowers with dimples at base
<i>Eucalyptus amygdalina</i>	e	black peppermint	tree 15 to 30 m with fine rough bark; leaves narrow; buds 7-15+
<i>Eucalyptus obliqua</i>		stringybark	tree to 90m; trunk & branches covered in soft, ridged bark; leaves very unsymmetrical;
<i>Eucalyptus viminalis</i>		white gum	tree to 50 m, bark rough at base then smooth; leaves green; buds 3
<i>Exocarpos cupressiformis</i>		common native-cherry	tree; conifer-like foliage; edible orange coloured fruit
<i>Gaultheria hispida</i>		copperleaf snowberry	shrub to 1m; leaves dark green, edges serrated; flowers urn shaped, white/pink; fruit white, fleshy
<i>Goodenia ovata</i>		hop native-primrose	shrub to 2m; leaves bright green, to 6cm, edges toothed; flowers yellow with petals in two groups
<i>Goodia lotifolia</i>		smooth goldentip	shrub to 4m high; leaves with 3 leaflets;
<i>Hibbertia procumbens</i>		spreading guineaflower	prostrate shrub spreading to 30cm; leaves to 2cm long, edges rolled under; flowers large, yellow very numerous
<i>Leptomeria drupacea</i>		erect currantbush	Much branched shrub to 2 m; leaves are tiny scales on stem; flowers very small, cream; fruit fleshy, reddish.

Dial Rng\$

<i>Leptospermum glaucescens</i>	e	smoky teatree	upright shrub/tree to 8m; leaves grey-green to 2cm; flowers white with red centres; fruit small, reddish, leathery
<i>Leptospermum lanigerum</i>		woolly teatree	shrub or small tree; leaves hairy; flowers white, hairy at base; fruit hairy at base
<i>Leptospermum scoparium</i>		common teatree	shrub to 4m; leaves to 2cm with prickly pointed tips; flowers white; fruit with 5 slits, top convex, woody
<i>Leucopogon australis</i>		spike beardheath	shrub to 2m; leaves lance-shaped to 4cm; flowers white, tubular, bearded inside
<i>Leucopogon parviflorus</i>		coast beardheath	shrub to 3m; leaves to 3cm, blunt pointed, margins rolled down; flowers white, tubular, bearded inside
<i>Lobelia anceps</i>		angled lobelia	perennial herb, prostrate, scrambling; stem with flattened ridges; flowers small, blue, two-lipped
<i>Lomatia tinctoria</i>	e	guitarplant	shrub; divided leaves very variable in form; white flowers
<i>Melaleuca pallida</i>		yellow bottlebrush	shrub/tree to 5 m; leaves blue/green; flowers yellow bottlebrush to 8 cm long.
<i>Nematolepis squamea</i>		satinwood	shrub/tree to 4 m; leaves to 8 cm, green upper surface, silvery below; flowers white/cream, 5 petals with prominent stamens.
<i>Notelaea ligustrina</i>		native olive	small tree; leaves lance-shaped to 5cm; small green to purple fruit
<i>Nothofagus cunninghamii</i>		myrtle beech	tree to 50m; leaves roundish, new growth red; flowers inconspicuous
<i>Olearia argophylla</i>		musk daisybush	shrub/tree to 15 m; large leaves with silver back; flowers in large crowded heads.
<i>Olearia lepidophylla</i>		clubmoss daisybush	spreading shrub to 1.5m tall; tiny leaves green above, white/hairy under; white/pink daisy flowers with 4-7 "petals"
<i>Olearia lirata</i>		forest daisybush	shrub to 5m; numerous white daisy flowers at ends of branches
<i>Olearia phlogopappa</i>		dusty daisybush	shrub to 1.5m; leaves hairy under, margins somewhat toothed; white daisy flowers to 2 cm diam.
<i>Oxylobium arborescens</i>		tall shaggypea	shrub to 6m; leaves to 8cm. edges turned down, dark green above, silky under; pea flowers golden, in clusters
<i>Persoonia juniperina</i>		prickly geebung	shrub; to 1.5 m tall; light green prickly leaves; delicate golden flowers
<i>Phyllanthus gunnii</i>		shrubby spurge	shrub to 3m; new stems red; leaves round; flowers small, white/green, 5 petals, in clusters
<i>Pimelea drupacea</i>		cherry riceflower	shrub to 3m;
<i>Pimelea ligustrina</i>			shrub to 2m high; leaves opposite, elliptical; flowers white, in large spherical heads

Dial Rng\$

<i>Pimelea linifolia</i>	slender riceflower	
<i>Pittosporum bicolor</i>	cheesewood	tree to 8m, conical habit; leaves dark green above, lighter below; flowers bell-shaped, brown & yellow
<i>Pomaderris apetala</i>	common dogwood	shrub/tree to 10 m; leaves to 10 cm with deep veins, white under; flowers cream/green in branched clusters.
<i>Pomaderris elliptica</i>	yellow dogwood	shrub/tree to 8 m; leaves to 10 cm, smooth, rusty under; flowers yellow, clustered.
<i>Prostanthera lasianthos</i>	Christmas mintbush	shrub or tree to 5 m; leaves to 8 cm, lanceolate with toothed edges; flowers white to lilac with purple spots in throat.
<i>Pultenaea daphnoides</i>	heartleaf bushpea	woody shrub to 2.5 m; leaves wedge-shaped with sharp point at end of central vein; golden pea flowers in terminal heads.
<i>Pultenaea gunnii</i>	golden bushpea	small shrub to 50 cm; leaf shape variable to 1 cm; orange/yellow pea flowers in terminal heads
<i>Pultenaea juniperina</i>	prickly beauty	shrub to 2.5m; leaves to 12mm, sharp pointed; golden pea flowers at ends of branches
<i>Sambucus gaudichaudiana</i>	white elderberry	shrub to 2m high; leaves with many pairs of opposite leaflets along a ridged stalk; flowers cream/white, in much branched bunches; fruit white, edible
<i>Senecio linearifolius</i>	common fireweed	perennial herb to 2m; leaves narrow linear; yellow daisy flowers in clusters
<i>Solanum laciniatum</i>	kangaroo apple	shrub; lobed leaves; large purple flowers; yellow/orange fruit
<i>Sprengelia incarnata</i>	pink swampheath	erect shrub to 2m; leaves hard, pointed, sheathing stem; flowers pink/white, in terminal clusters
<i>Stackhousia monogyna</i>	forest candles	herb to 50cm. several erect stems; leaves narrow; flowers white tubular in dense spikes at ends of stems.
<i>Stellaria pungens</i>	prickly starwort	perennial herb, scrambling over rocks or other plants; leaves to 10 mm long, sharp pointed; flowers solitary, on stalks, 5 white, deeply divided petals (look like 10 narrow petals)
<i>Stylidium graminifolium</i>	narrowleaf triggerplant	herb to 50cm; leaves narrow, strap-like; flowers pink, four-petalled, in spikes
<i>Tasmannia lanceolata</i>	mountain pepper	tree to 5m; leaves lance-shaped on red stems; flowers yellow; fruit red turning black
<i>Tetradlea pilosa</i>	hairy pinkbells	shrub to 60 cm tall; pink flowers pendulous on stalks
<i>Viola hederacea</i>	ivy-leaf violet	herb; perennial, spreading; kidney shaped leaves; violet flowers on stalks

Dial Rng\$

<i>Xanthosia pilosa</i>		woolly crossherb	shrub to 60cm high; leaves variable, 3-lobed, hairy; flowers tiny in groups of 1-3
<i>Zieria arborescens</i>		stinkwood	shrub/tree to 8 m; leaves with 3 leaflets to 10 cm with unpleasant smell when crushed; flowers with 4 white/pink petals.
<i>Adiantum aethiopicum</i>		common maidenhair	delicate plant with fan-shaped leaves
<i>Blechnum wattsi</i>		hard waterfern	fronds dark green, divided only once, fertile fronds different
<i>Dicksonia antarctica</i>		soft treefern	Tall fern, trunks to several metres tall
<i>Pteridium esculentum</i>		bracken	common fern to 2.5m tall; leathery much divided frond
<i>Acianthus caudatus</i>		mayfly orchid	tiny brown orchid; heart shaped leaf pressed to the ground
<i>Acianthus pusillus</i>		small mosquito-orchid	
<i>Caladenia carnea</i>		pink fingers	herb to 25 cm; single narrow narrow; 1 to 6 showy pink flowers
<i>Chiloglottis gunnii</i>	e	tall bird-orchid	herb; two opposite leaves pressed to ground; single maroon flower
<i>Corybas incurvus</i>		slaty helmet-orchid	small orchid; leaf heart-shaped, green below; flower dark purple with white central patch and a fringe of short teeth
<i>Dianella tasmanica</i>		forest flaxlily	perennial to 1.5m; leaves long, narrow, margins serrated; flowers on long stalks, 6-petalled, blue; fruit a blue/purple shiny berry
<i>Drymophila cyanocarpa</i>		turquoise berry	
<i>Eriochilus cucullatus</i>		autumn-orchid	to 30 cm tall pink flower like a parson's bands
<i>Patersonia fragilis</i>		short purpleflag	
<i>Pterostylis melagramma</i>	*	blackstripe greenhood	
<i>Pterostylis nutans</i>		nodding greenhood	orchid with single green nodding flower on stem to 30cm
<i>Pterostylis parviflora</i>		tiny greenhood	orchid to 25cm high; leaves stem-clasping; flowers 1-6, inward facing, green- and white-striped
<i>Pterostylis pedunculata</i>		maroonhood	orchid with single green flower with maroon "nose" on stem to 25cm
<i>Thelymitra flexuosa</i>		twisted sun-orchid	orchid to 35cm high; leaf to 15cm long, linear; flowers 1-4, cream/yellow, to 15mm across



PLANT LIST

Dial Range

Created

10-Jun-13

Updated

09-May-23

By

Dick Burns, Burnie FNC

[Goto List](#)



GJ [*Acacia dealbata*](#)

silver wattle

tree with grey green feathery leaves; golden flowers



GJ [*Acacia melanoxylon*](#)

blackwood

tree to 30m; leaves with parallel veins; round flower heads



RW [*Acacia mucronata*](#)

subsp. dependens

caterpillar wattle

shrub to small tree; leaves narrow to 15 cm, small point;
golden flowers in spikes.



RW [Acacia mucronata](#)
subsp. mucronata
caterpillar wattle
erect shrub/small tree; leaves narrow linear to 15cm long with short narrow point; yellow flowers in spikes



GJ [Acacia suaveolens](#)
sweet wattle
shrub to 2 m; phyllodes blue/green to 15 cm; flowers round, cream, in axils, sweet scented.



GJ [Acacia verticillata](#)
subsp. verticillata
prickly moses
shrub/tree to 6 m; phyllodes in whorls, sharp; flowers yellow, in spikes.



GJ [Amperea xiphoclada](#)
broom spurge
almost leafless with angles stems, forms clumps resembling grass tussock



GJ [Aotus ericoides](#)
golden pea
shrub to 1.5m; leaves narrow to 12mm long, margins downrolled; yellow pea flower with red throat



GJ [*Aristotelia peduncularis*](#)

heartberry
straggling shrub to 1.5m; leaves to 70mm. lance-shaped, edges serrated; flowers white, bell-shaped, petals three-toothed; fruit heart shaped, white, red or black



GJ [*Atherosperma moschatum*](#)

sassafras
tree to 25m; leaves to 8cm elliptical, margins often toothed; flowers white, in pairs, pendulous, 4-petalled. Male and female flowers on same or separate trees



GJ [*Banksia marginata*](#)

silver banksia
tree with typical banksia cones or yellow flower spikes



GJ [*Bauera rubioides*](#)

wiry bauera
sprawling wiry shrub; leaves opposite, each with three leaflets; flowers white to pink



GJ [*Bedfordia salicina*](#)

tasmanian blanketleaf
shrub/tree to 5m; leaves dark green above silver hairy below; yellow daisy flowers in groups



GJ [Billardiera macrantha](#)

forest appleberry
vine clammers over other plants; leaves lance-like to 5cm;
flowers tubular, yellow/green; fruit blue/purple



GJ [Billardiera mutabilis](#)

green appleberry
vine; narrow leaves; yellowish bell-shaped flowers; yellow fruit



GJ [Boronia anemonifolia](#)

stinky boronia
shrub to 2m high; leaves dark green, with 3 leaflets, to 1.5cm
long; flowers 4-petalled, white/pink



GJ [Bursaria spinosa](#)

prickly box
small tree; distinctive "purses" (seed cases); white starry
flowers



GJ [Cassinia aculeata](#)

dolly bush
shrub to 3 m; large clusters of small white flowers



GJ [*Cassytha glabella*](#)

slender dodderlaurel
slender parasitic twiner; appears leafless; tiny white flowers in bunches on short stalks



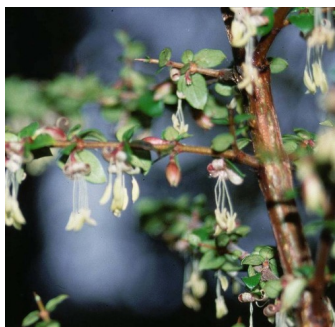
GJ [*Comesperma volubile*](#)

blue lovecreeper
wiry climber; small leaves; blue flowers along stems



GJ [*Coprosma hirtella*](#)

coffeeberry
shrub to 2m; leaves dark green, leathery to 6cm long, pointed tip; fruit red/black, fleshy



GJ [*Coprosma quadrifida*](#)

native currant
erect shrub to 4m; leaves to 10mm; flowers, male & female on separate plants, 4 white petals; fruit shiny red/orange



RS [*Cyathodes glauca*](#)

purple cheeseberry
shrub to 3m; leaves pointed, to 5cm, green above whitish below; flowers tubular, white; fruit fleshy, white to red



RW [*Daviesia ulicifolia*](#)

yellow spiky bitterpea
prickly woody shrub to 2 m; leaves spiky to 3 cm; yellow pea flowers with reddish markings.



GJ [*Drosera auriculata*](#)

tall sundew
herb; fine stem; leaves fringed with glistening hairs



GJ [*Drosera binata*](#)

forked sundew
herb; leaves forked, on long stem, blades with glistening hairs; flowers white, to 2cm diam, in groups of up to 40



GJ [*Epacris impressa*](#)

common heath
shrub; white, red or pink tubular flowers with dimples at base



GJ [*Eucalyptus amygdalina*](#)

black peppermint
tree 15 to 30 m with fine rough bark; leaves narrow; buds 7-15+



GJ [*Eucalyptus obliqua*](#)

stringybark
tree to 90m; trunk & branches covered in soft, ridged bark;
leaves very unsymmetrical;



GJ [*Eucalyptus viminalis*](#)

white gum
tree to 50 m, bark rough at base then smooth; leaves green;
buds 3



GJ [*Exocarpos cupressiformis*](#)

common native-cherry
tree; conifer-like foliage; edible orange coloured fruit



RS [*Gaultheria hispida*](#)

copperleaf snowberry
shrub to 1m; leaves dark green, edges serrated; flowers urn
shaped, white/pink; fruit white, fleshy



GJ [*Goodenia ovata*](#)

hop native-primrose
shrub to 2m; leaves bright green, to 6cm, edges toothed;
flowers yellow with petals in two groups



GJ [Goodia lotifolia](#)

smooth goldentip
shrub to 4m high; leaves with 3 leaflets;



RS [Hibbertia procumbens](#)

spreading guineaflower
prostrate shrub spreading to 30cm; leaves to 2cm long, edges rolled under; flowers large, yellow very numerous



GJ [Leptomeria drupacea](#)

erect currantbush
Much branched shrub to 2 m; leaves are tiny scales on stem; flowers very small, cream; fruit fleshy, reddish.



GJ [Leptospermum glaucescens](#)

smoky teatree
upright shrub/tree to 8m; leaves grey-green to 2cm; flowers white with red centres; fruit small, reddish, leathery



RS [Leptospermum lanigerum](#)

woolly teatree
shrub or small tree; leaves hairy; flowers white, hairy at base; fruit hairy at base



GJ [*Leptospermum scoparium*](#)

common teatree
shrub to 4m; leaves to 2cm with prickly pointed tips; flowers white; fruit with 5 slits, top convex, woody



GJ [*Leucopogon australis*](#)

spike beardheath
shrub to 2m; leaves lance-shaped to 4cm; flowers white, tubular, bearded inside



GJ [*Leucopogon parviflorus*](#)

coast beardheath
shrub to 3m; leaves to 3cm, blunt pointed, margins rolled down; flowers white, tubular, bearded inside



GJ [*Lobelia anceps*](#)

angled lobelia
perennial herb, prostrate, scrambling; stem with flattened ridges; flowers small, blue, two-lipped



GJ [*Lomatia tinctoria*](#)

guitarplant
shrub; divided leaves very variable in form; white flowers



GJ [Melaleuca pallida](#)

yellow bottlebrush
shrub/tree to 5 m; leaves blue/green; flowers yellow
bottlebrush to 8 cm long.



GJ [Nematolepis squamea](#)

subsp. squamea
satinwood
shrub/tree to 4 m; leaves to 8 cm, green upper surface, silvery below; flowers white/cream, 5 petals with prominent stamens.



GJ [Notelaea ligustrina](#)

native olive
small tree; leaves lance-shaped to 5cm; small green to purple fruit



RS [Nothofagus cunninghamii](#)

myrtle beech
tree to 50m; leaves roundish, new growth red; flowers inconspicuous



GJ [Olearia argophylla](#)

musk daisybush
shrub/tree to 15 m; large leaves with silver back; flowers in large crowded heads.



GJ [*Olearia lepidophylla*](#)

clubmoss daisybush
spreading shrub to 1.5m tall; tiny leaves green above,
white/hairy under; white/pink daisy flowers with 4-7 "petals"



GJ [*Olearia lirata*](#)

forest daisybush
shrub to 5m; numerous white daisy flowers at ends of
branches



GJ [*Olearia phlogopappa*](#)

dusty daisybush
shrub to 1.5m; leaves hairy under, margins somewhat
toothed; white daisy flowers to 2 cm diam.



GJ [*Oxylobium arborescens*](#)

tall shaggypea
shrub to 6m; leaves to 8cm. edges turned down, dark green
above, silky under; pea flowers golden, in clusters



GJ [*Persoonia juniperina*](#)

prickly geebung
shrub; to 1.5 m tall; light green prickly leaves; delicate golden
flowers



GJ *Phyllanthus gunnii*

shrubby spurge
shrub to 3m; new stems red; leaves round; flowers small,
white/green, 5 petals, in clusters



BC *Pimelea drupacea*

cherry riceflower
shrub to 3m;



GJ *Pimelea ligustrina*

shrub to 2m high; leaves opposite, elliptical; flowers white, in
large spherical heads



GJ *Pimelea linifolia*

slender riceflower



AS *Pittosporum bicolor*

cheesewood
tree to 8m, conical habit; leaves dark green above, lighter
below; flowers bell-shaped, brown & yellow



GJ [*Pomaderris apetala*](#)

common dogwood
shrub/tree to 10 m; leaves to 10 cm with deep veins, white under; flowers cream/green in branched clusters.



GJ [*Pomaderris elliptica*](#)

yellow dogwood
shrub/tree to 8 m; leaves to 10 cm, smooth, rusty under; flowers yellow, clustered.



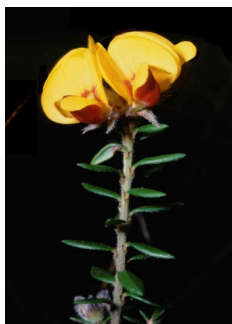
GJ [*Prostanthera lasianthos*](#)

var. lasianthos
Christmas mintbush
shrub or tree to 5 m; leaves to 8 cm, lanceolate with toothed edges; flowers white to lilac with purple spots in throat.



GJ [*Pultenaea daphnoides*](#)

heartleaf bushpea
woody shrub to 2.5 m; leaves wedge-shaped with sharp point at end of central vein; golden pea flowers in terminal heads.



GJ [*Pultenaea gunnii*](#)

golden bushpea
small shrub to 50 cm; leaf shape variable to 1 cm; orange/yellow pea flowers in terminal heads



RW *Pultenaea juniperina*

prickly beauty
shrub to 2.5m; leaves to 12mm, sharp pointed; golden pea
flowers at ends of branches



GJ *Sambucus gaudichaudiana*

white elderberry
shrub to 2m high; leaves with many pairs of opposite leaflets
along a ridged stalk; flowers cream/white, in much branched
bunches; fruit white, edible



GJ *Senecio linearifolius*

common fireweed
perennial herb to 2m; leaves narrow linear; yellow daisy
flowers in clusters



GJ *Solanum laciniatum*

kangaroo apple
shrub; lobed leaves; large purple flowers; yellow/orange fruit



GJ *Sprengelia incarnata*

pink swampheath
erect shrub to 2m; leaves hard, pointed, sheathing stem;
flowers pink/white, in terminal clusters



GJ *Stackhousia monogyna*

forest candles
herb to 50cm. several erect stems; leaves narrow; flowers white tubular in dense spikes at ends of stems.



GJ *Stellaria pungens*

prickly starwort
perennial herb, scrambling over rocks or other plants; leaves to 10 mm long, sharp pointed; flowers solitary, on stalks, 5 white, deeply divided petals (look like 10 narrow petals)



BC *Styliidium graminifolium*

narrowleaf triggerplant
herb to 50cm; leaves narrow, strap-like; flowers pink, four-petaled, in spikes



RS *Tasmannia lanceolata*

mountain pepper
tree to 5m; leaves lance-shaped on red stems; flowers yellow; fruit red turning black



GJ *Tetratheca pilosa*

hairy pinkbells
shrub to 60 cm tall; pink flowers pendulous on stalks



GJ [*Viola hederacea*](#)

ivyleaf violet
herb; perennial, spreading; kidney shaped leaves; violet flowers on stalks



GJ [*Xanthosia pilosa*](#)

woolly crossherb
shrub to 60cm high; leaves variable, 3-lobed, hairy; flowers tiny in groups of 1-3



GJ [*Zieria arborescens*](#)

stinkwood
shrub/tree to 8 m; leaves with 3 leaflets to 10 cm with unpleasant smell when crushed; flowers with 4 white/pink petals.



GJ [*Adiantum aethiopicum*](#)

common maidenhair
delicate plant with fan-shaped leaves



GJ [*Blechnum watsii*](#)

hard waterfern
fronds dark green, divided only once, fertile fronds different



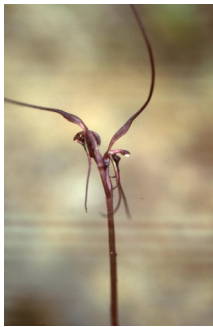
GJ *Dicksonia antarctica*

soft treefern
Tall fern, trunks to several metres tall



GJ *Pteridium esculentum*

subsp. esculentum
bracken
common fern to 2.5m tall; leathery much divided frond



JC *Acianthus caudatus*

mayfly orchid
tiny brown orchid; heart shaped leaf pressed to the ground



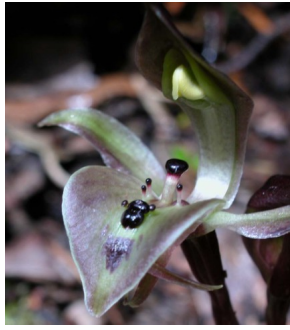
GJ *Acianthus pusillus*

small mosquito-orchid



JC *Caladenia carnea*

pink fingers
herb to 25 cm; single narrow narrow; 1 to 6 showy pink flowers



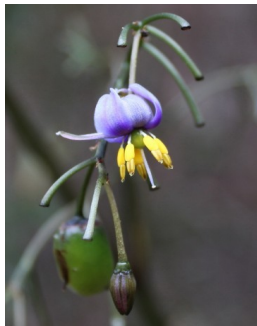
GJ *Chiloglottis gunnii*

tall bird-orchid
herb; two opposite leaves pressed to ground; single maroon flower



GJ *Corybas incurvus*

slaty helmet-orchid
small orchid; leaf heart-shaped, green below; flower dark purple with white central patch and a fringe of short teeth



BC *Dianella tasmanica*

forest flaxlily
perennial to 1.5m; leaves long, narrow, margins serrated; flowers on long stalks, 6-petalled, blue; fruit a blue/purple shiny berry



GJ *Drymophila cyanocarpa*

turquoise berry



GJ *Eriochilus cucullatus*

autumn-orchid
to 30 cm tall pink flower like a parson's bands



GJ [*Patersonia fragilis*](#)

short purpleflag



GJ [*Pterostylis melagramma*](#)

blackstripe greenhood



GJ [*Pterostylis nutans*](#)

nodding greenhood
orchid with single green nodding flower on stem to 30cm



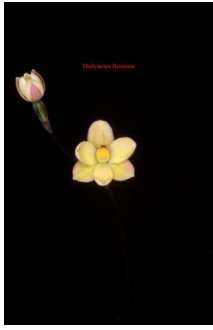
JC [*Pterostylis parviflora*](#)

tiny greenhood
orchid to 25cm high; leaves stem-clasping; flowers 1-6, inward facing, green- and white-striped



GJ [*Pterostylis pedunculata*](#)

maroonhood
orchid with single green flower with maroon "nose" on stem to 25cm



JC *Thelymitra flexuosa*

twisted sun-orchid

orchid to 35cm high; leaf to 15cm long, linear; flowers 1-4,
cream/yellow, to 15mm across