

List



PLANT LIST
Carr Villa Reserve

Created 28-Oct-22
Updated 23-May-23
By R Skabo

[Goto Photos](#)

Scientific name	status	Common Name	Description
Acacia dealbata		silver wattle	tree with grey green feathery leaves; golden flowers
Acacia genistifolia		spreading wattle	shrub; golden flowers in spheres; stiff dagger-like leaves
Acaena novae-zelandiae		common buzzy	herb; leaves divided; balls of flower/seeds with hooks
Acianthus caudatus		mayfly orchid	tiny brown orchid; heart shaped leaf pressed to the ground
Allocasuarina littoralis		black sheoak	tree; fruit like small pine cones; segmented needle-like "leaves"
Allocasuarina verticillata		drooping sheoak	tree with "leaves" hanging down or drooping
Arthropodium milleflorum		pale vanilla-lily	herb to 50 cm; grass-like leaves; flowers white/mauve drooping
Arthropodium strictum		chocolate lily	herb to 90 cm; grass-like leaves; showy purple flowers with chocolate aroma
Banksia marginata		silver banksia	tree with typical banksia cones or yellow flower spikes
Billardiera mutabilis		green appleberry	vine; narrow leaves; yellowish bell-shaped flowers; yellow fruit
Bossiaea prostrata		creeping bossia	wiry prostrate stems; yellow & crimson pea flowers
Brachyscome decipiens		field daisy	herb; bright green leaves in rosette; single blue/white daisy flower
Brachyscome spathulata		spoonleaf daisy	herb perennial, to 30cm high; leaves spoon-shaped, to 6cm long; flower head usually mauve, to 4cm diam, on long stalk
Brunonia australis	r	blue pincushion	rosette herb; grey/green leaves; cornflower blue flower heads
Burchardia umbellata		milkmaids	herb; leaves grass-like; white 6-petalled flowers with maroon centres
Bursaria spinosa		prickly box	small tree; distinctive "purses" (seed cases); white starry flowers
Caesia parviflora		pale grass lily	herb to 45 cm; leaves grass-like; 6-petalled gree/white or blue flowers
Caladenia carnea		pink fingers	herb to 25 cm; single narrow narrow; 1 to 6 showy pink flowers
Cassinia aculeata		dolly bush	shrub to 3 m; large clusters of small white flowers
Chamaescilla corymbosa		blue stars	herb to 25 cm; leaves grass-like; flowers 6-petalled, star-like, blue
Chiloglottis gunnii	e	tall bird-orchid	herb; two opposite leaves pressed to ground; single maroon flower

List

<i>Clematis aristata</i>	mountain clematis	climber; leaves multi-lobed; large white star-like flowers
<i>Clematis gentianoides</i>	ground clematis	herb to 50cm tall; large star-like white flowers
<i>Comesperma volubile</i>	blue lovecreeper	wiry climber; small leaves; blue flowers along stems
<i>Convolvulus angustissim</i>	bindweed	herb; prostrate; conspicuous pink funnel-shaped flowers
<i>Coronidium scorpioides</i>	curling everlasting	herb with single golden daisy flower heads on long stems
<i>Craspedia glauca</i>	e common billybuttons	herb; tiny cream flowers in almost spherical heads;
<i>Cyanothamnus nanus</i>	dwarf boronia	small shrub; white & pink 4-petalled flowers
<i>Daviesia latifolia</i>	hop bitterpea	shrub; broad leaves with obvious venation; gold & brown pea flowers
<i>Dianella revoluta</i>	flax lily	strap-like leaves; blue & yellow flowers; blue berries, stamen tips yellow
<i>Diplarrena moraea</i>	white flag-iris	strap-like leaves; white flowers
<i>Dipodium roseum</i>	rosy hyacinth-orchid	leafless red/brown stem to 80 cm; numerous showy pink flowers
<i>Diuris sulphurea</i>	tiger orchid	herb to 50 cm; leaves grass-like; 1 to 7 golden flowers with brown markings
<i>Drosera macrantha</i>	climbing sundew	herb; fine stem with round leaves fringed with glistening hairs
<i>Epacris impressa</i>	common heath	shrub; white, red or pink tubular flowers with dimples at base
<i>Eriochilus cucullatus</i>	autumn-orchid	to 30 cm tall pink flower like a parson's bands
<i>Eucalyptus amygdalina</i>	e black peppermint	tree 15 to 30 m with fine rough bark; leaves narrow; buds 7-15+
<i>Eucalyptus pauciflora</i>	cabbage gum	large gum tree; leaves with parallel veins
<i>Eucalyptus viminalis</i>	white gum	tree to 50 m, bark rough at base then smooth; leaves green; buds 3
<i>Exocarpos cupressiformis</i>	common native-cherry	tree; conifer-like foliage; edible orange coloured fruit
<i>Geranium potentilloides</i>	geranium	herb; lobed leaves; pink flowers; "storksbill" fruit
<i>Glossodia major</i>	waxlip orchid	herb to 30 cm; single hairy leaf; 1 or 2 large purple/mauve flowers
<i>Gompholobium huegelii</i>	common wedgepea	herb; pea flower yellow inside and blackish outside
<i>Goodenia lanata</i>	trailing native-primrose	prostrate herb; leaves to 7cm, dark green above lighter below; flowers golden, asymmetric on long stem
<i>Helichrysum apiculatum</i>	everlasting	herb; stems & leaves white silky-hairy; golden paper daisy flower heads
<i>Hibbertia riparia</i>	erect guineaflower	shrub; narrow leaves; golden 5-petalled flowers
<i>Hovea heterophylla</i>	winter purplepea	small shrub; dark green leaves; violet pea flowers
<i>Hypericum gramineum</i>	small st johns-wort	small herb; small yellow flowers
<i>Kennedia prostrata</i>	running postman	herb; prostrate & sprawling; leaves with 3 leaflets; crimson pea flower

List

<i>Leptorhynchos squamatu</i>	scaly buttons	herb; narrow leaves; solitary daisy flower head on wiry stem to 20 cm tall;
<i>Linum marginale</i>	native flax	herb; slender stem to 50 cm tall; blue flowers 2 cm diam. on long stems
<i>Lissanthe strigosa</i>	peachberry	shrub; 50 cm tall; prickly leaves; flowers pink in bud then white tubular
<i>Lomandra longifolia</i>	sagg	tussock of strap-like leaves with notched ends; flowers in spiny clusters
<i>Lomandra nana</i>	dwarf mat-rush	
<i>Pauridia vaginata</i>	[R] star-lily	
<i>Persoonia juniperina</i>	prickly geebung	shrub; to 1.5 m tall; light green prickly leaves; delicate golden flowers
<i>Philotheca verrucosa</i>	fairy waxflower	shrub; branches warty; profusion of white star-like flowers
<i>Pimelea humilis</i>	dwarf riceflower	dwarf shrub to 20cm tall; white flowers grouped in terminal heads
<i>Platylobium obtusangulu</i>	common flatpea	shrub to 1 m tall; triangular leaves; yellow pea flowers
<i>Platylobium parviflorum</i>	handsome flatpea	shrub to 1 m tall; lance-shaped leaves; yellow pea flowers
<i>Pterostylis nutans</i>	nodding greenhood	orchid with single green nodding flowe on stem to 30cm
<i>Pterostylis pedunculata</i>	maroonhood	orchid with single green flower with maroon "nose" on stem to 25cm
<i>Solanum laciniatum</i>	kangaroo apple	shrub; lobed leaves; large purple flowers; yellow/orange fruit
<i>Stackhousia monogyna</i>	forest candles	herb to 50cm. several erect stems; leaves narrow; flowers white tubular in dense spikes at ends of stems.
<i>Stylidium graminifolium</i>	narrowleaf triggerplant	herb to 50cm; leaves narrow, strap-like; flowers pink, four-petalled, in spikes
<i>Styphelia humifusa</i>	native cranberry	ground cover; prickly leaves; red tube flowers in winter
<i>Tetratheca pilosa</i>	hairy pinkbells	shrub to 60 cm tall; pink flowers pendulous on stalks
<i>Thelymitra ixioides</i>	spotted sun-orchid	
<i>Thysanotus patersonii</i>	twining fringelily	
<i>Viola hederacea</i>	ivyleaf violet	herb; perennial, spreading; kidney shaped leaves; violet flowers on stalks
<i>Wahlenbergia gracilentia</i>	annual bluebell	herb; dark blue star-like flowers
<i>Wurmbea dioica</i>	early nancy	lily-like herb to 15 cm; 6-petalled flowers
<i>Zieria arborescens</i>	stinkwood	shrub/tree to 8 m; leaves with 3 leaflets to 10 cm with unpleasant smell when crushed; flowers with 4 white/pink petals.



PLANT LIST
Carr Villa Reserve

Created 28-Oct-22
Updated 23-May-23
By R Skabo

[Goto List](#)



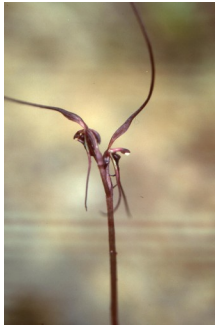
GJ [*Acacia dealbata*](#)
subsp. dealbata
silver wattle
tree with grey green feathery leaves; golden flowers



GJ [*Acacia genistifolia*](#)
spreading wattle
shrub; golden flowers in spheres; stiff dagger-like leaves



RS [*Acaena novae-zelandiae*](#)
common buzzy
herb; leaves divided; balls of flower/seeds with hooks



JC [*Acianthus caudatus*](#)

mayfly orchid
tiny brown orchid; heart shaped leaf pressed to the ground



RS? [*Allocasuarina littoralis*](#)

black sheoak
tree; fruit like small pine cones; segmented needle-like
"leaves"



GJ [*Allocasuarina verticillata*](#)

drooping sheoak
tree with "leaves" hanging down or drooping



GJ [*Arthropodium milleflorum*](#)

pale vanilla-lily
herb to 50 cm; grass-like leaves; flowers white/mauve
drooping



GJ [*Arthropodium strictum*](#)

chocolate lily
herb to 90 cm; grass-like leaves; showy purple flowers with
chocolate aroma



GJ [*Banksia marginata*](#)

silver banksia
tree with typical banksia cones or yellow flower spikes



GJ [*Billardiera mutabilis*](#)

green appleberry
vine; narrow leaves; yellowish bell-shaped flowers; yellow fruit



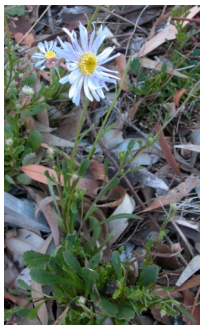
GJ [*Bossiaea prostrata*](#)

creeping bossia
wiry prostrate stems; yellow & crimson pea flowers



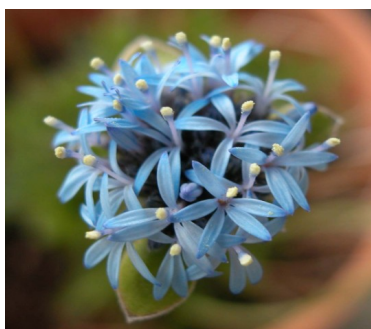
GJ [*Brachyscome decipiens*](#)

field daisy
herb; bright green leaves in rosette; single blue/white daisy flower



AS [*Brachyscome spathulata*](#)

spoonleaf daisy
herb perennial, to 30cm high; leaves spoon-shaped, to 6cm long; flower head usually mauve, to 4cm diam, on long stalk



GJ *Brunonia australis*

blue pincushion
rosette herb; grey/green leaves; cornflower blue flower heads



GJ *Burchardia umbellata*

milkmaids
herb; leaves grass-like; white 6-petalled flowers with maroon centres



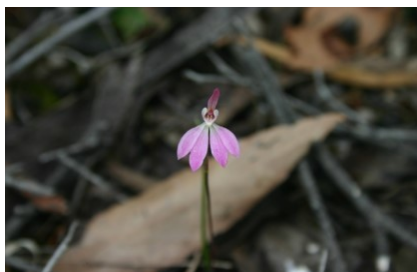
GJ *Bursaria spinosa*

prickly box
small tree; distinctive "purses" (seed cases); white starry flowers



GJ *Caesia parviflora*

pale grass lily
herb to 45 cm; leaves grass-like; 6-petalled green/white or blue flowers



JC *Caladenia carnea*

pink fingers
herb to 25 cm; single narrow narrow; 1 to 6 showy pink flowers



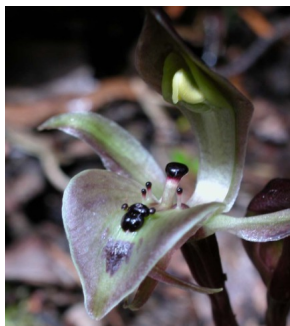
GJ [*Cassinia aculeata*](#)

dolly bush
shrub to 3 m; large clusters of small white flowers



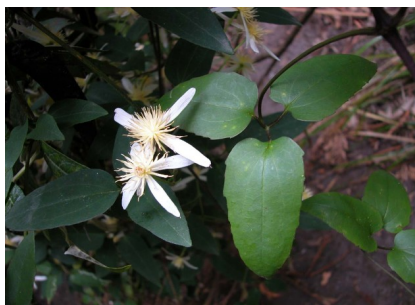
TY [*Chamaescilla corymbosa*](#)

blue stars
herb to 25 cm; leaves grass-like; flowers 6-petalled, star-like, blue



GJ [*Chiloglottis gunnii*](#)

tall bird-orchid
herb; two opposite leaves pressed to ground; single maroon flower



GJ [*Clematis aristata*](#)

mountain clematis
climber; leaves multi-lobed; large white star-like flowers



GJ [*Clematis gentianoides*](#)

ground clematis
herb to 50cm tall; large star-like white flowers



GJ [*Comesperma volubile*](#)

blue lovecreeper
wiry climber; small leaves; blue flowers along stems



GJ [*Convolvulus angustissimus*](#)

bindweed
herb; prostrate; conspicuous pink funnel-shaped flowers



RS [*Coronidium scorpioides*](#)

curling everlasting
herb with single golden daisy flower heads on long stems



GJ [*Craspedia glauca*](#)

common billybuttons
herb; tiny cream flowers in almost spherical heads;



GJ [*Cyanothamnus nanus*](#)

dwarf boronia
small shrub; white & pink 4-petaled flowers



GJ *Daviesia latifolia*

hop bitterpea
shrub; broad leaves with obvious venation; gold & brown pea
flowers



GJ *Dianella revoluta*

var. *revoluta*
flax lily
strap-like leaves; blue & yellow flowers; blue berries, stamen
tips yellow



GJ *Diplarrena moraea*

white flag-iris
strap-like leaves; white flowers



GJ *Dipodium roseum*

rosy hyacinth-orchid
leafless red/brown stem to 80 cm; numerous showy pink
flowers



GJ *Diuris sulphurea*

tiger orchid
herb to 50 cm; leaves grass-like; 1 to 7 golden flowers with
brown markings



DW [*Drosera macrantha*](#)

climbing sundew
herb; fine stem with round leaves fringed with glistening hairs



GJ [*Epacris impressa*](#)

common heath
shrub; white, red or pink tubular flowers with dimples at base



GJ [*Eriochilus cucullatus*](#)

autumn-orchid
to 30 cm tall pink flower like a parson's bands



GJ [*Eucalyptus amygdalina*](#)

black peppermint
tree 15 to 30 m with fine rough bark; leaves narrow; buds 7-15+



GJ [*Eucalyptus pauciflora*](#)

cabbage gum
large gum tree; leaves with parallel veins



GJ *Eucalyptus viminalis*

white gum
tree to 50 m, bark rough at base then smooth; leaves green;
buds 3



GJ *Exocarpos cupressiformis*

common native-cherry
tree; conifer-like foliage; edible orange coloured fruit



RW *Geranium potentilloides*

geranium
herb; lobed leaves; pink flowers; "storksbill" fruit



GJ *Glossodia major*

waxlip orchid
herb to 30 cm; single hairy leaf; 1 or 2 large purple/mauve
flowers



BC *Gompholobium huegelii*

common wedgepea
herb; pea flower yellow inside and blackish outside



RS *Goodenia lanata*

trailing native-primrose
prostrate herb; leaves to 7cm, dark green above lighter below;
flowers golden, asymmetric on long stem

Helichrysum apiculatum

everlasting
herb; stems & leaves white silky-hairy; golden paper daisy
flower heads



BC *Hibbertia riparia*

erect guineaflower
shrub; narrow leaves; golden 5-petalled flowers



GJ *Hovea heterophylla*

winter purplepea
small shrub; dark green leaves; violet pea flowers



GJ *Hypericum gramineum*

small St. John's-wort
small herb; small yellow flowers



GJ [*Kennedia prostrata*](#)

running postman
herb; prostrate & sprawling; leaves with 3 leaflets; crimson pea flower



GJ [*Leptorhynchos squamatus*](#)

scaly buttons
herb; narrow leaves; solitary daisy flower head on wiry stem to 20 cm tall;



GJ [*Linum marginale*](#)

native flax
herb; slender stem to 50 cm tall; blue flowers 2 cm diam. on long stems



GJ [*Lissanthe strigosa*](#)

peachberry
shrub; 50 cm tall; prickly leaves; flowers pink in bud then white tubular



GJ [*Lomandra longifolia*](#)

sagg
tussock of strap-like leaves with notched ends; flowers in spiny clusters



GJ [*Lomandra nana*](#)

dwarf mat-rush

[*Pauridia vaginata*](#)

star-lily



GJ [*Persoonia juniperina*](#)

prickly geebung

shrub; to 1.5 m tall; light green prickly leaves; delicate golden flowers



GJ [*Philothea verrucosa*](#)

fairy waxflower

shrub; branches warty; profusion of white star-like flowers



GJ [*Pimelea humilis*](#)

dwarf riceflower

dwarf shrub to 20cm tall; white flowers grouped in terminal heads



GJ [*Platylobium obtusangulum*](#)

common flatpea
shrub to 1 m tall; triangular leaves; yellow pea flowers

[*Platylobium parviflorum*](#)

handsome flatpea
shrub to 1 m tall; lance-shaped leaves; yellow pea flowers



GJ [*Pterostylis nutans*](#)

nodding greenhood
orchid with single green nodding flower on stem to 30cm



GJ [*Pterostylis pedunculata*](#)

maroonhood
orchid with single green flower with maroon "nose" on stem to 25cm



GJ [*Solanum laciniatum*](#)

kangaroo apple
shrub; lobed leaves; large purple flowers; yellow/orange fruit



GJ *Stackhousia monogyna*

forest candles
herb to 50cm. several erect stems; leaves narrow; flowers white tubular in dense spikes at ends of stems.



BC *Styliidium graminifolium*

narrowleaf triggerplant
herb to 50cm; leaves narrow, strap-like; flowers pink, four-petalled, in spikes



GJ *Styphelia humifusa*

native cranberry
ground cover; prickly leaves; red tube flowers in winter



GJ *Tetratheca pilosa*

hairy pinkbells
shrub to 60 cm tall; pink flowers pendulous on stalks



GJ *Thelymitra ixioides*

spotted sun-orchid



GJ [*Thysanotus patersonii*](#)

twining fringelily



GJ [*Viola hederacea*](#)

ivyleaf violet

herb; perennial, spreading; kidney shaped leaves; violet flowers on stalks



GJ [*Wahlenbergia gracilentia*](#)

annual bluebell

herb; dark blue star-like flowers



GJ [*Wurmbea dioica*](#)

subsp. Dioica

early nancy

lily-like herb to 15 cm; 6-petalled flowers



GJ [*Zieria arborescens*](#)

stinkwood

shrub/tree to 8 m; leaves with 3 leaflets to 10 cm with unpleasant smell when crushed; flowers with 4 white/pink petals.